

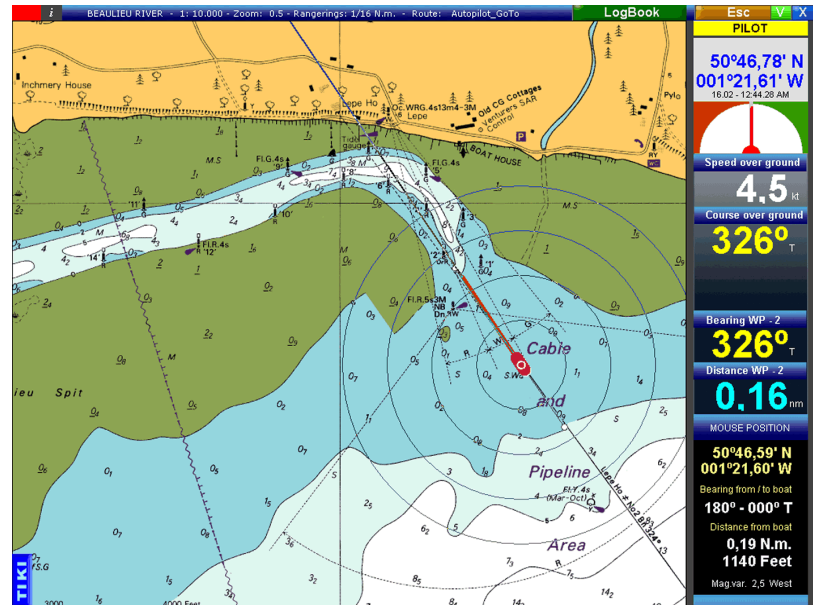
## TIKI NAVIGATOR PRO – FIRST LOOK

There are many computer navigation programs available now and anyone trying to break into the market must show immediately that they have a worthwhile product. One such newcomer is the TIKI Navigator, developed by Fred Jenssen from Asker in Norway, who is both a sailor and a programmer.

Fred's main claim for the program is that it's intuitive to use and leaves as much of the computer screen clear for display of the chart as is possible. In fact, taking it to an extreme, you can hide everything, if you so wish, and have a full screen chart.

TIKI Navigator uses UKHO raster scanned charts from Maptech, which cost £99.95 for a folio covering, say, Portland to Ramsgate or Great Yarmouth to Ramsgate, providing automatic loading and display of the next chart required during a passage. This brings it close to the 'seamless' transition of vector charts.

The basis of TIKI's clear screen is a series of hidden menus that are popped up by moving the cursor to the edge of the screen. Go towards the upper right hand edge and the main menu list appears; go to the bottom of the screen and a series of 12 function buttons pops up with their descriptions, such as MOB, displayed by hovering the cursor over each in turn. Hold the cursor at the top left hand corner and you are provided with the means to change charts, split the screen, or change from day to night display illumination. Then again, if you right click anywhere on the chart a box pops up with nine control buttons in it, enabling you to zoom in or out, change scale of the chart



displayed and go straight to the boat's position.

A very handy floating window can be opened (via F1 from the pop up function buttons) that lists what will happen if you left or right click the mouse wherever it is currently pointing. It's likely to prove particularly handy while exploring and learning how to use TIKI Navigator. It can readily be hidden.

Using the pop up main menu, entering the route planning and activation menu takes just a mouse click. From there you can readily lay out a route, check it, edit it and activate it. Each waypoint is automatically numbered, but can instead be given your own name or reference. This is about the only process likely to require use of the computer's keyboard; virtually all other functions are mouse driven or activated.

When we downloaded the program from the TIKI website it came through without hesitation

then unzipped and installed smoothly. It opened up and found the GPS connection unhesitatingly then, hey presto, there was the boat on the chart. It really couldn't have been easier. There's an on line tutorial, which will get you started quickly, but even without it you'll soon find how to do things.

The screen carries all the main information in a window down the right hand side with bright, bold colours and numerals, but even this can be switched off easily if you are planning and want the whole screen for the chart. Once into the route, the Pro version of TIKI can provide a 'maximum view ahead' display to show the greatest area of chart ahead of the boat.

The TIKI Navigator program looks and, particularly, feels quite different from other computer nav software and it will be interesting to see how it all works out. I'll let you know.

Colin Jarman